

Anti-DLL3 hlgG1 Reference Antibody (Rovabio)

Product Information

Product Name	Anti-DLL3 hlgG1 Reference Antibody (Rovabio)
Storage temp.	Store at 2-8°C short term (1-2 weeks).Store at $\leq -20^{\circ}\text{C}$ long term. Avoid repeated freeze-thaw.
Catalog# / Size	GM-87163MAB-1mg / 1 mg GM-87163MAB-5mg / 5 mg GM-87163MAB-25mg / 25 mg GM-87163MAB-50mg / 50 mg GM-87163MAB-100mg / 100 mg

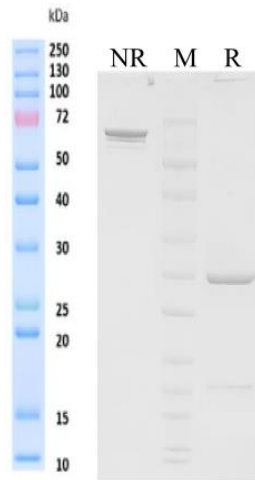
Antibody Information

Expression System	CHO
Aggregation	< 5% as determined by SEC-HPLC
Purity	> 95% as determined by SDS-PAGE
Endotoxin	< 1 EU/mg, determined by LAL gel clotting assay
Sterility	0.2 μm Filtered
Target	DLL3
Clone	Rovalpituzumab
Alternative Names	SCDO1
Source/Isotype	Human IgG1(KDEL,delta 447K), Kappa
Application	Flow cytometry
Description	Delta-like 3 (Drosophila), also known as DLL3, is a protein which in humans is encoded by the DLL3 gene. This gene encodes a member of the delta protein ligand family. This family functions as Notch ligands that are characterized by a DSL domain, EGF repeats, and a transmembrane domain. Expression of DLL3 is highest in fetal brain. It plays a key role in somitogenesis within the Paraxial mesoderm. Mutations in this gene cause the autosomal recessive genetic disorder Jarcho-Levin syndrome. Expression of the gene occurs in Neuroendocrine tumors, which has been targeted as a potential pathway for treatment. An experimental drug, rovalpituzumab tesirine, targets DLL3 as a possible treatment for lung cancer.
Formulation	phosphate-buffered solution, pH 7.4.

Version:3.3

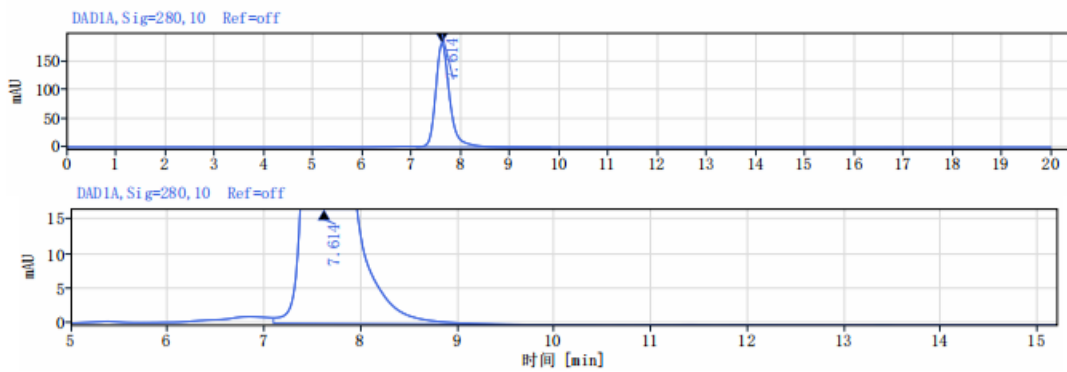
Data Examples

SDS-PAGE



On SDS-PAGE under reducing (R)/non-reducing(N-R) condition. The gel was stained overnight with Coomassie Blue. The purity of the protein is greater than 95%.

SEC-HPLC

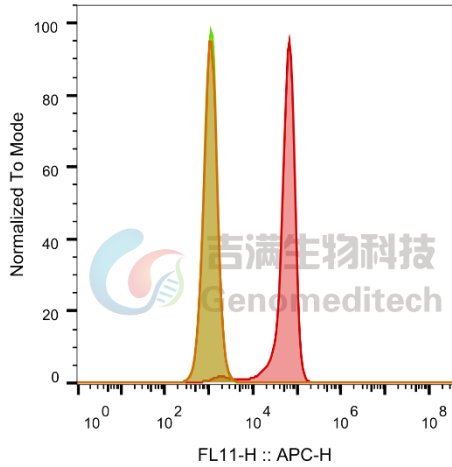


The purity of this product is more than 95% verified by SEC-HPLC

Data Examples

Flow cytometry

H_DLL3 HEK-293 Cell Line (Catalog # GM-C12896) was stained with Anti-DLL3 hIgG1 Reference Antibody (Rovabio) (Catalog # GM-87163MAB) or isotype control antibody, followed by anti-Human IgG APC-conjugated Secondary Antibody.

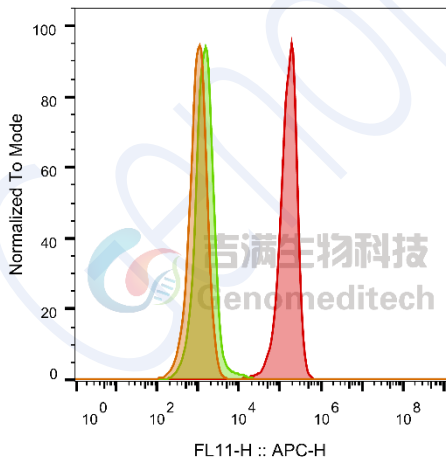


SampleID	Geometric Mean : FL11-H
HEK-293 anti-DLL3+APC-2nd Ab	1092
HEK-293 H_DLL3 H_IgG+APC-2nd Ab	1096
HEK-293 H_DLL3 anti-DLL3+APC-2nd Ab	53296

Fig. FACS

Flow cytometry

H_DLL3 CHO-K1 Cell Line (Catalog # GM-C25970) was stained with Anti-DLL3 hIgG1 Reference Antibody (Rovabio) (Catalog # GM-87163MAB) or isotype control antibody, followed by anti-Human IgG APC-conjugated Secondary Antibody.

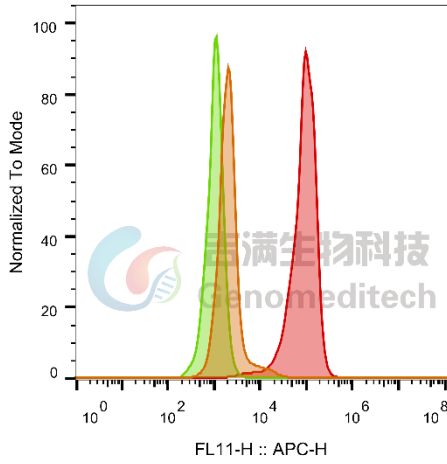


SampleID	Geometric Mean : FL11-H
CHO-K1 anti-H_DLL3+APC-2nd Ab	985
CHO-K1 H_DLL3 H_IgG+APC-2nd Ab	1480
CHO-K1 H_DLL3 anti-H_DLL3+APC-2nd Ab	154994

Fig. FACS

Flow cytometry

H_DLL3 CT26 Cell Line (Catalog # GM-C39524) was stained with Anti-DLL3 hlgG1 Reference Antibody (Rovabio) (Catalog # GM-87163MAB) or isotype control antibody, followed by anti-Human IgG APC-conjugated Secondary Antibody.



	SampleID	Geometric Mean : FL11-H
	CT26 anti-DLL3+APC-2nd Ab	2131
	CT26 H_DLL3 H_IgG+APC-2nd Ab	1055
	CT26 H_DLL3 anti-DLL3+APC-2nd Ab	83913

Fig. FACS